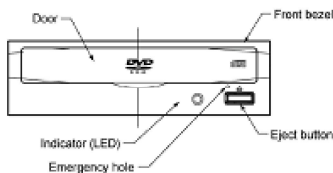
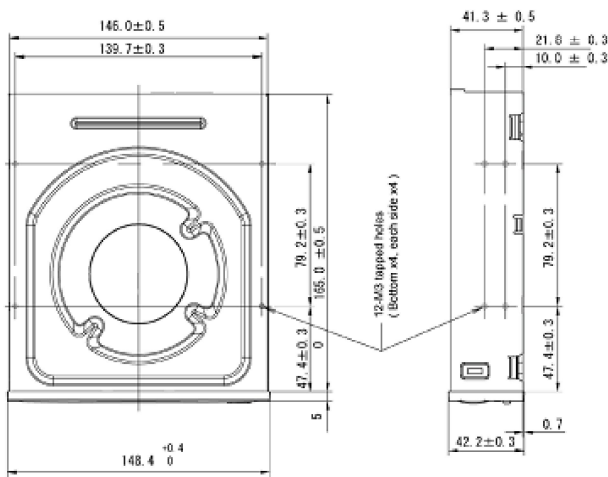
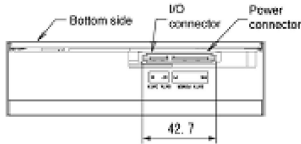


TEAC®

18x DVD-ROM **16x DVD±R**
8x DVD±R DL **48x CD-R**
12x DVD±RW **40x CD-RW**

DV-518GSC Half Height DVD ROM Drive

- Half height (41.3mm) industry-standard design
- Horizontal and vertical mounting for most system configuration
- Black and Beige front panel model available



(Unit : mm)

Read Speed (Max Speed)	DVD-ROM SL	18 x (CAV)
	DVD±R	16 x (CAV)
	DVD±R (DL)	8x (CAV)
	(Finalized Disc)	
	DVD±RW	12x (CAV)
	CD-ROM / R	48x (CAV)
Access Time	CD-RW	40x (CAV)
	CD-DA (DAE)	48x (CAV)
Disc Diameter	12cm, 8cm	
Interface	SerialATA	
Data Transfer Rate	Gen1 1.5GB/sec	
Access Time	120ms (typ) DVD-ROM	
	120ms (typ) CD-ROM	
	198KB	
Loading Mechanism	Tray Type	
Environmental Conditions		
Ambient Temperature	Operating	5 to 45°C
	Non Operating	-20 to 60°C
	Transportation	-40 to 65°C
Ambient Humidity	Operating	20 to 80% (non-condensing) *
	Non Operating	10 to 85% (non-condensing) *
	Transportation	5 to 90% (non-condensing) *
Power Consumption	DC5V ± 5%, DC12V±10%	
Current Consumption	Sleep 0.09A (5V) / 0.03A (12V) (Average current max)	
	During starting 0.76A (5V) / 2.3A (12V) (Max. Spikes less 10ms)	
	During Seek 1.5A (5V) / 3.3A (12V) (Max. Spikes less 10ms)	
MTBF	70,000POH (25% duty)	
Safety / EMI Standards	UL, CUL, TÜV, CB, CE, RCM, KC and BSMI	
Dimensions	148.4W x 42.2H x 170.0D (mm)	
Mass (Weight)	570g typ	
RoHS	2011 / 65 / EU complied	

Remarks

Please check the specification sheets for detailed conditions and other information.

* The maximum wet-bulb temp. is 29 degree C

DVD is a trademark of DVD Format/Logo Licensing Corporation registered in the U.S., Japan and other countries.

株式会社アルメディア オ 営業本部 営業部

〒186-0002 東京都国立市東1-4-12 KS国立ビル7階 電話 042-511-0480 FAX 042-511-0491

<http://www.almedio.co.jp>

ALMEDIO INC. Sales Headquarters Storage Solution Section

Kunitachi Office KS kunitachi Building, 7F, 4-12, 1chome, Higashi, Kunitachi-shi, Tokyo, 186-0002, Japan

Phone +81-42-511-0480 Fax +81-42-511-0491

<http://www.almedio.co.jp>

このカタログの記載内容は2019年9月現在のものです。
The contents presented in this catalog were updated as September 2019.

PRINTED IN JAPAN.